



Transforming Higher Education

Data Migration, Testing and Integration Services for your
Digital Transformation

Prolifics[®]

www.prolifics.ai/uk

Digital Transformation

Ensuring Success in Higher Education



Prolifics, a Higher Education specialist with 18+ years in the sector, has partnered with over 45 Universities.

Our expertise spans Digital Transformations, Student Management System implementations, ERP / CRM programmes and Cloud migrations.

We possess domain knowledge in various applications, including Tribal SITS, Ellucian Banner, TechnologyOne, SAP Student Lifecycle Management, Salesforce, Unit4, Oracle PeopleSoft, Moodle, CMISGO, and Dynamics 365.

Though our University experience originated in the UK, we've extended services to Universities in Singapore, Vietnam, Malaysia, New Zealand, and Australia.

18+

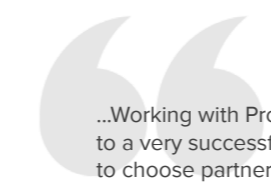
Years of experience

40+

Universities worldwide



Our EdTech partners include:



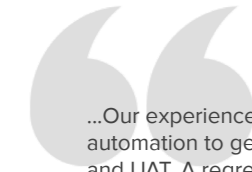
...Working with Prolifics went a long way to providing confidence in our KentVision system and also contributed to a very successful 2023 Clearing round from a technical perspective. The University of Kent works very hard to choose partners carefully, with a view to creating long-term working relationships that are beneficial to both parties. As such, we are very happy to provide this testimonial and look forward to building on our partnership with Prolifics in the future.

Carl Swaffer
Corporate Systems Manager, University of Kent



Milestones

Past and Current Engagements



...Our experience was excellent, the team overcame challenges with data, using automation to generate large data sets to be used within both automation and UAT. A regression pack was developed, covering both the web interface and the SITS client to automate our core processes, including the vital Online Application Form using their Quality Fusion platform.

The team worked flexibly and within our timescales to achieve their objectives and provided valuable support to the programme. We continue to work together, expanding our automation packs and customising Quality Fusion functions for SITS.

Suki Samra

Test Manager, Arden University



Areas of Expertise

Expert Support Beyond Boundaries

Student Information Systems

Implementing new Student Information Systems can be complex and costly. Our team of experts has hands on experience with migrating data from legacy systems, end-to-end testing of your new platform and developing integrations from your new cloud based SIS to downstream systems.

Cloud Migration

Whether your goal is to simply lift and shift an on-premise application to the Cloud or to undertake application modernisation, Prolifics has Azure and AWS experts to help you along this journey. Take away the risk of doing it all yourselves with a trusted HE sector specialist.

Learning Management Systems

We can ensure that both students taking assessments and staff grading students will have accessible and functional platforms, especially during peak assessment periods.



...Most notably around the area of load testing as these performance issues were causing setbacks in our project timelines and impacting our stakeholder's confidence in the applications we support. Prolifics have helped us swiftly in identifying, tracking, and rectifying these performance issues with a comprehensive report which allowed us to remedy these issues and meet our projects.

In conclusion, Prolifics has been a game-changer for the HE industry and their testing services have not only helped us overcome some of our major testing challenges but have helped us achieve success.

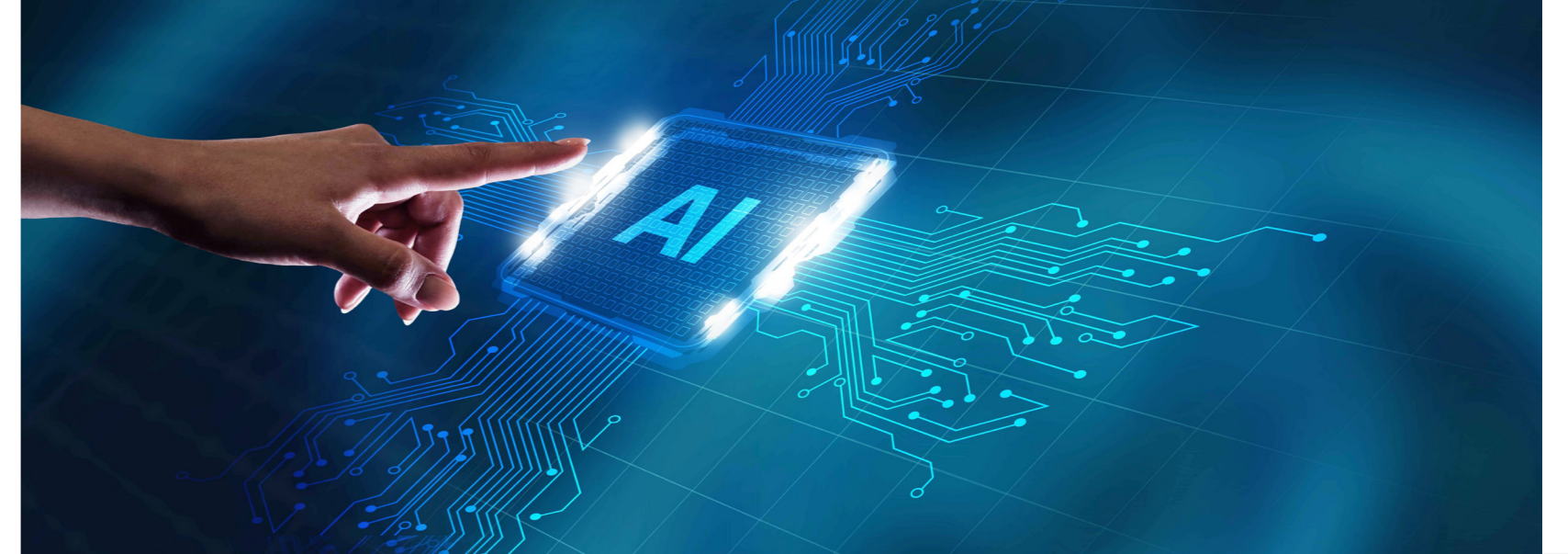
Jason Lopez

Test Manager, Queen Mary University of London



Specialised Solutions

Types of Testing Services



Implementation Testing

Implementing applications in higher education requires rigorous testing to ensure success. Our team can provide a fully managed service which includes test management of all phases, comprehensive functional testing, integration testing, supporting UAT. We can offer onsite support or cost effective hybrid delivery through our offshore test centre of excellence.

Performance Testing

Ensure that your Student Management System or IVR/Telephony platforms can support the anticipated number of student and staff at key points in the academic calendar such as Clearing, Enrolments, Module Registration and Results Release through our Performance Testing services. We can simulate real life traffic to ensure all platforms are fully performant.



Test Automation

Prolifics has a lot of experience in implementing test automation within Universities. Whether you are looking at free Opensource tools such as Playwright or Enterprise tools which enable code-free automation and leverage GenAI and Agentic Automation, we can help.

Security Testing

To guarantee the security of both your on-premises and cloud-based systems, we provide Penetration Testing and Vulnerability Assessment services. These services are conducted by consultants certified in CREST and CISSP, ensuring a thorough and expert evaluation to identify and address any potential security vulnerabilities.

Specialised Solutions

Data Migration for the Higher Education Sector

Whether you are looking to move to a new Student Management System or Curriculum Management Platform, getting data from legacy systems to your new cloud based platform can be challenging. Prolifics has a dedicated Data team who have deep expertise in Data Migrations for the HE sector. Our experienced Data Architect can undertake a short Discovery phase to understand your requirements, which allows us to offer recommendations and a fixed price for your Data Migration.

Automation First Approach

At Prolifics we have an automation first approach to Data Migrations. We use an opensource Pentaho Framework to help automate all aspects of your Data Migration, through extracting data, cleansing it, transforming it to load ready tables and then undertaking validation and reconciliation.



Leveraging GenAI & LLM's

Universities often have a lot of data trapped in unstructured formats, including Word documents, spreadsheets and PDF's. It can be problematic and time consuming using conventional ETL methods to extract data from these sources. At Prolifics, we have trained our own LLM to be able to automatically extract, cleanse, transform and validate unstructured data, which is particularly useful when considering Curriculum Management implementations.

Specialised Solutions

Established Integrations and API Practice



As universities move their on-prem systems to the cloud, the question arises, what is your integration strategy?

Cloud-based APIs are now widely adopted, yet choosing between Azure or AWS and established middleware platforms such as MuleSoft, Boomi or IBM requires careful evaluation. At Prolifics, our roots are in integration - we have strong partnerships and proven expertise spanning all of these leading vendors.



Our integration architects can help select and implement the right platform, develop APIs on demand, and provide 24/7/365 L2 and L3 support. Whether defining an integration strategy or accelerating API delivery, Prolifics' specialists are ready to help.

Prolifics®



Prolifics is a global digital transformation company with over 2,000 employees and 47 years of delivery experience. We specialise in Quality Engineering, aiding organisations with cloud migration, implementing modern API Integrations and utilising AI-enabled Analytics for trapped operational data. Our key partnerships include Microsoft, AWS, MuleSoft, IBM, Red Hat, Talend and Salesforce.

Contact Us:

- +44 (0) 20 8905 2761
- UKSolutions@prolifics.com
- www.prolifics.ai/uk



Crown
Commercial
Service
Supplier



ucisa Corporate
Member